

Late H1 CDI

New board size – 2.375 X 1.125 inches

Parts list

D1	IN4004	or NTE125
D2	IN4004	or NTE125
D3	IN4004	or NTE125
R1	1k ohm	1/2 watt
C1	0.047	µfd
C2	2.2 µfd	450 to 600 volt (the higher the voltage rating the physically larger the cap)
SCR1	TIC106M	or NTE5438

Basic instructions –

Cut single sided board to specs

Print the board layout on transparency media and use the photo-etch method to make the board

Etch board and drill holes for components

Install components on non-copper side of board (C2 mounts on trace side of board) and solder

The wires must be salvaged from the old unit and reused on the new unit

The housing can be reused or new board installed in different housing

Lightly heat old unit to melt/remove potting (caution – major stinkfest!!)

Cut wires as close to old board as possible

Install wires in new board and solder

Test new unit before potting

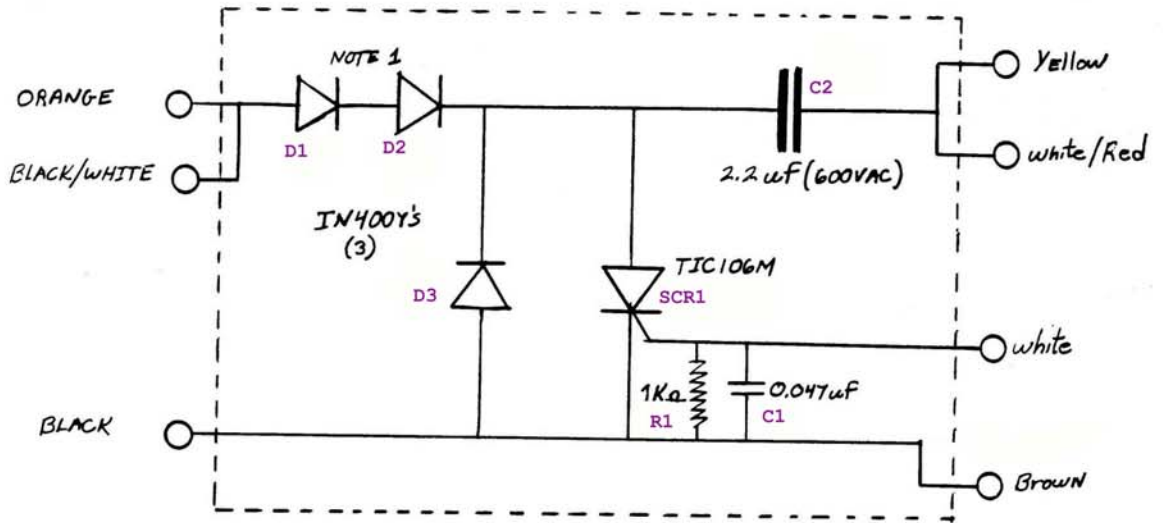
Use high quality electrical tape around board/components and install in housing

Use potting material to repot unit - Flexane 80 by Devcon p/n 15800 works well (make sure you don't get air pockets)

Reinstall unit and go ride

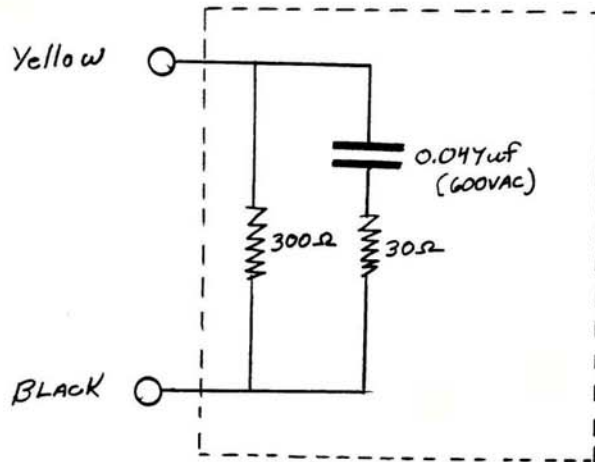
DIAGRAM "A"

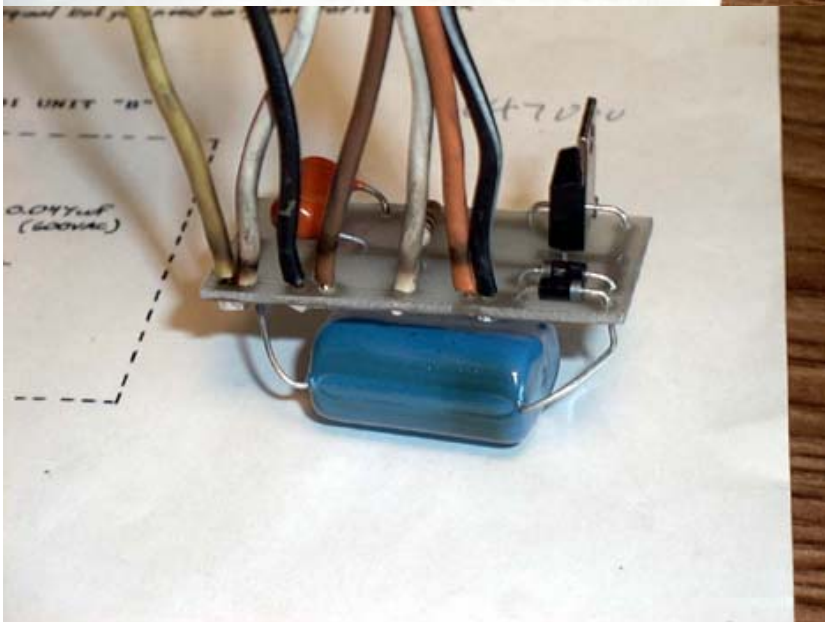
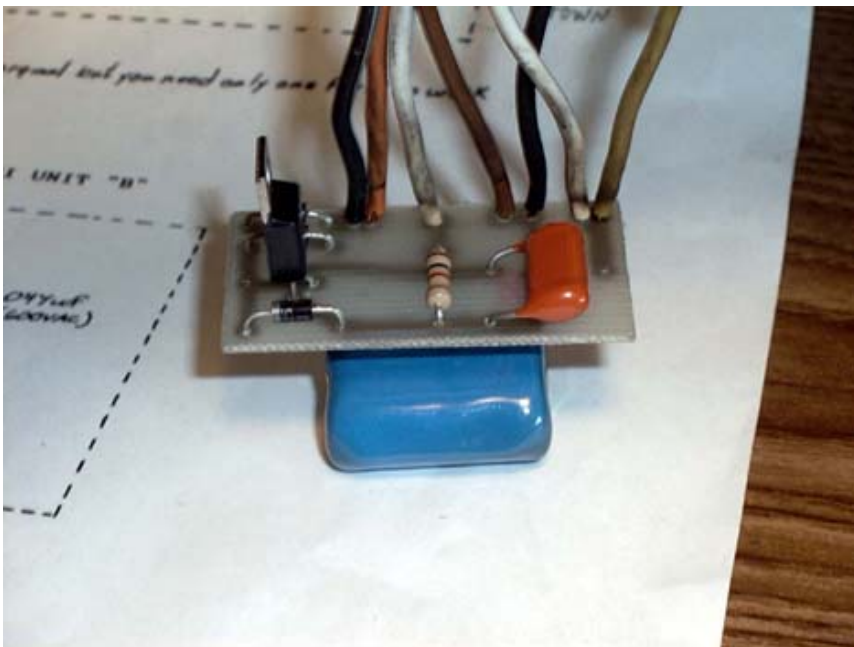
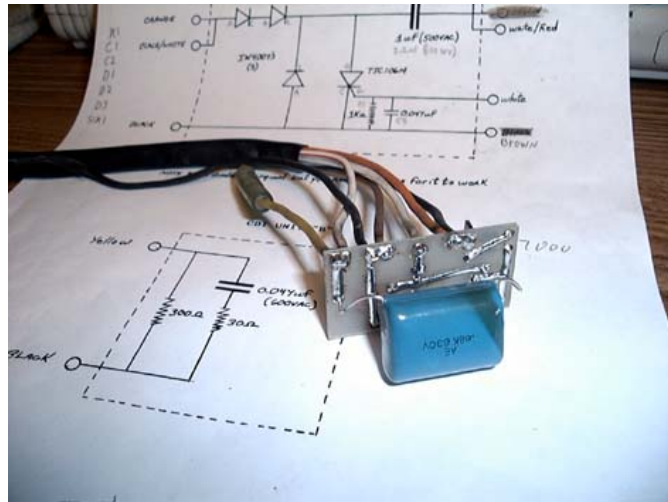
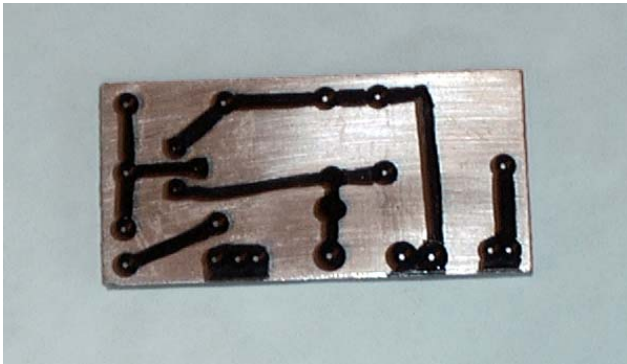
H1 CDI UNIT "A"

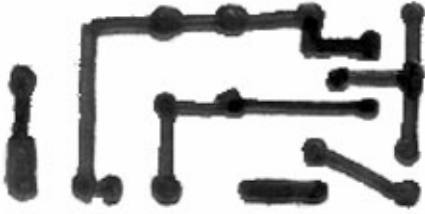


NOTE 1: 2 diodes in original but you need only one for it to work

CDI UNIT "B"







Print this on transparency media and use the photo-etch method to make the board or use this as a guide to make your own layout.

FYI – in the last photo (the 2 diodes side by side) the diode next to the SCR is in backwards, the silver band should be towards the outer edge of the board. Photo was taken before testing.

Wires (from SSMX6T 31372):

Black – with 6mm round lug (Ground wire) is 12.5” in length

Yellow – with female bullet (connects to “B” box) is 14.5” in length

White – with male bullet (Pickup trigger) is 13.25” in length

White/Red – with female bullet (to coils) is 12.75” in length

Orange (female) and Brown (male) 2 conductor plug (CDI Power from stator) is 8.5” in length

Black/White – with female bullet (Ignition kill) is 7.25”

Grommet and wire orientation:

